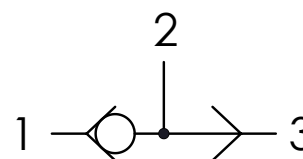




		01	02
CODICE ORDINAZIONE ORDERING CODE		SV	
01	VALVOLE SELETRICI (LOAD SHUTTLE - BALL VALVES)		SV
02	DIMENSIONE (SIZE)	3/4-16UNF	08
		7/8-14UNF	10

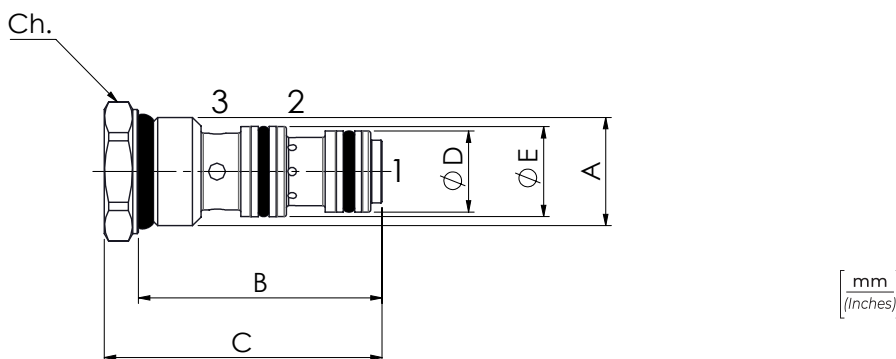
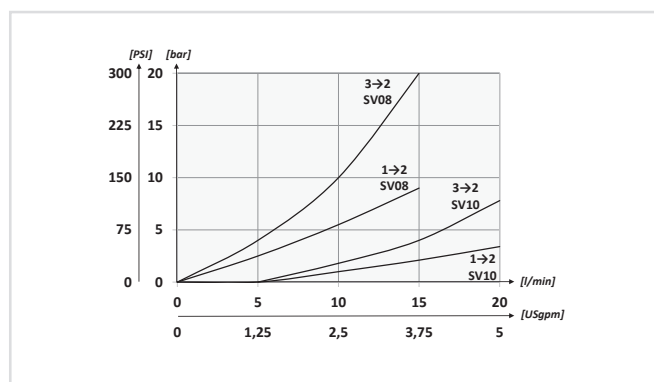
SCHEMA IDRAULICO / HYDRAULIC CIRCUIT



DATI TECNICI / TECHNICAL DATA

Olio idraulico - Mineral oil	ISO 6743/4 (DIN 51524)
Viscosità olio - Oil viscosity	15-250 mm ² /s (15 to 250 cSt)
Classe di contaminazione max Max contamination index	ISO 4406:1999 Classe 19/17/14
Temperatura dell'olio - Oil temperature	-20°C +80°C -4°F +176°F
Temperatura ambiente - Environment temperature	-20°C +50°C -4°F +122°F
È indispensabile l'utilizzo di un filtro per proteggere la valvola (filtrazione consigliata 15 µm) It is necessary a filter use to protect the valve (advised filtration 15 µm)	

PERFORMANCES



CARATTERISTICHE TECNICHE / TECHNICAL CHARACTERISTICS

TIPO TYPE	A	PORTATA MAX MAX FLOW l/min-USgpm	PRESSIONE MAX MAX PRESSURE bar-PSI	U	V	D	E	PESO APPROX APPROXWEIGHT kg-lbt	COPPIA DI SERRAGGIO TIGHTENING TORQUE Nm-lbt ft	CAVITÀ CAVITY	Ch. Key
SV08	3/4-16UNF	15 (4)	350 (5075)	41 (1.61)	49 (1.93)	14,2 (0.56)	15,8 (0.62)	0,07 (0.15)	25-30 (19-22)	SAE8/3	22
SV10	7/8 - 14UNF	30 (7.9)		47 (1.85)	55 (2.17)	15,8 (0.62)	17,4 (0.69)	0,10 (0.22)	41-47 (30-35)	SAE10/3	27



notes

Area for handwritten notes with horizontal dotted lines.